

# SANDRINGHAM NEWS

Nurture Enrich Inspire

Monday 14<sup>th</sup> September 2020



## Message from Mrs Money

Welcome back to the start of the academic year. I hope that you all had a fabulous summer and managed to rest, recharge and enjoy the wonderful weather. I cannot begin to tell you how lovely it felt to be able to fully open Sandringham again after so many months of closure and partial opening. The children have returned with such enthusiasm, smiles and readiness for school. For staff it has been quite emotional seeing the children having fun with their friends and hearing the happy buzz of children throughout the school at last.

A very warm welcome to our new children and families who have joined Reception, Little Badgers Nursery and across Key Stage 1. I hope that you are all feeling very much part of our Sandringham family already.

Thank you all for supporting us in the new drop off and pick up arrangements. In light of the current increase in cases across the country it is essential that parents adhere to the following please;

- Arrive at the correct times, please be prompt but not early or late. This is particularly important for Reception, Year 1 and Nursery who will all be entering through the main school gate at three staggered times once Reception children go full time. Please avoid joining the queue before your child's start time as this creates an issue with the 'flow' of parents.
- Ensure children stay with you in line/on the path at all times. They must not run around the car park or grassed area.
- Ensure that adults are vigilant in following social distancing guidelines at all times. Guidance states that young children are not expected to/are unlikely to distance from each other however adults must! Please also bear this in mind when speaking to school staff.
- Be aware that some parents/childminders have multiple year group/times for drop off so may need to join the line midway to ensure that their children go into school with their year group.
- Follow the one way system out of school (along the front of building and out the car park gates) to avoid two way traffic at the front pedestrian gates. Please do not exit through the pedestrian gate even if it appears clear, although it is a little further to walk it does help to keep the whole community as safe as possible.

The cough and cold season is upon us already and many children have already come down with runny noses and sneezes. It is essential that we work together to ensure that the school doesn't need to close any year groups but also keep a balanced view on everyday colds. Please appreciate that the office team are following strict guidance (please see NHS guidance included on next page) and will give you the same advice on the phone as you will read online. If children appear unwell at school we will test their temperature and contact you for an urgent collection if necessary.

Thankyou very much for your support in what I am sure that you will agree is a challenging time for schools and parents alike.

### PLEASE REMEMBER

#### SCHOOL DAY

Reception - 8.40 - 3pm  
(as of Monday 21st)

Year 1 & 2- 8.50 - 3.10pm

Friday - Reception: 12.45  
Year 1 & 2: 1pm

Nursery - as per your  
child's arranged sessions

#### PHOTOGRAPHER

Our school photographer will be visiting on Tuesday 15<sup>th</sup> September. Photos will be taken outside and following covid guidelines.

#### UNIFORM

Please ensure all uniform is named and in line with school policy. Hair must be tied up with green accessories only. Backpacks need to be school design or a small alternative. There is not space for large backpacks in the cloakrooms.

#### EARRINGS

We prefer that earrings are not worn to school. Parents will be asked to sign a disclaimer to accept all responsibility for injury and ears must be taped at home for PE sessions.



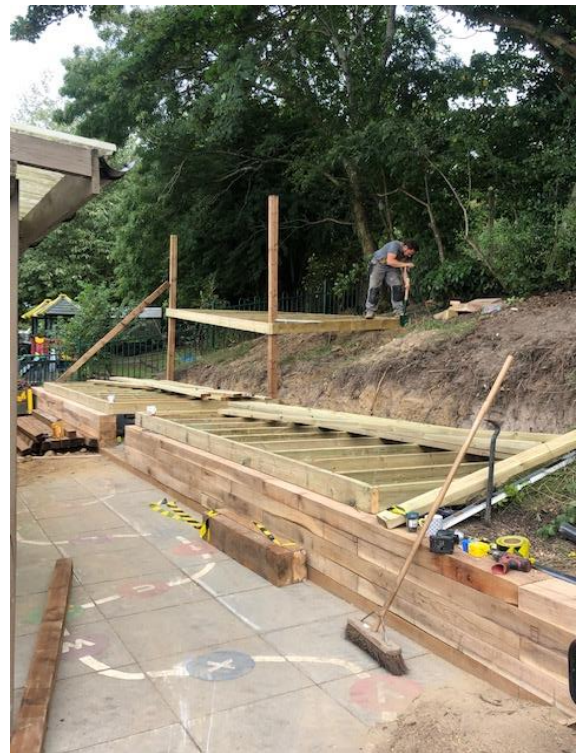
## Little Princess Trust sponsored haircuts

Well done to Elizabeth and Eleanor who both had their long hair cut to donate to the Little Princess Trust. This trust provides real wigs to children who have lost their hair due to cancer treatment. I am sure that you will all agree that this is a really special thing to do and their new bobs look gorgeous!



## New Reception decking area

A huge thank you to Mr Cooper who built the amazing new decked area outside the Reception classes over the summer holiday. And an enormous thank you to a wonderful parent for their donation which made this project possible.



## NHS guidance

### The main symptoms are coronavirus are;

- A high temperature
- A new, continuous cough - this means coughing a lot, for more than an hour, or 3 or more coughing episodes in 24 hours
- A loss or change to sense of smell or taste - this means they cannot smell or taste anything, or things smell different to normal

### What to do if your child has symptoms:

If your child has any of the main symptoms of coronavirus:

1. Get a test to check if they have coronavirus as soon as possible
2. Stay at home and do not have visitors until you get the test result - only leave your home to have a test

Anyone you live with, and anyone in your support bubble must stay at home until you get the result. **PLEASE KEEP SCHOOL INFORMED OF ILLNESS/TESTING.**

## Covid changes to the school day

As you are aware schools are opening under strict new guidance which school leaders are asked to apply as per the age of the children in their schools. Please be reassured that we are taking these very seriously but also remain mindful that all of our children are very young and we need to keep them safe without frightening them. These are some of the new routines we have in school which your children may talk to you about.

- All staff and children wash and antibac their hands on entry and exit from school
- All classes have a germ busting table with antibac and tissues
- Children and staff wash their hands at regular intervals throughout the day including after going to the toilet, playtime and lunchtimes
- Staggered drop off and pick up times for Early Years and Key Stage 1
- Year 2 and Year 1 have separate 'bubbles'. Early Years are one 'bubble' (Nursery and Reception)
- Separate playtime and lunchtimes so that bubbles are kept separate. Tables and chairs are wiped down in between lunch sittings
- Parents are currently not permitted into the school building. Any professional visitors (speech and language therapists, school nurse, educational psychologists) can only attend the school with an appointment and will follow strict track and trace procedures
- Children in Year 1 and 2 have their own pencil pots and table spaces
- Our class mascots aren't currently able to come home for adventures