

An illustration of an Arctic landscape. In the foreground, a large polar bear stands on a snow-covered rock. To its left, a smaller white fox-like animal sits on a rocky shore with small pink flowers. The background shows a blue sky with a white bird flying, a large snow-capped mountain, and a body of water with several fish swimming. The title 'The Arctic' is written in large, blue, outlined letters across the middle of the scene.

The Arctic


twinkl

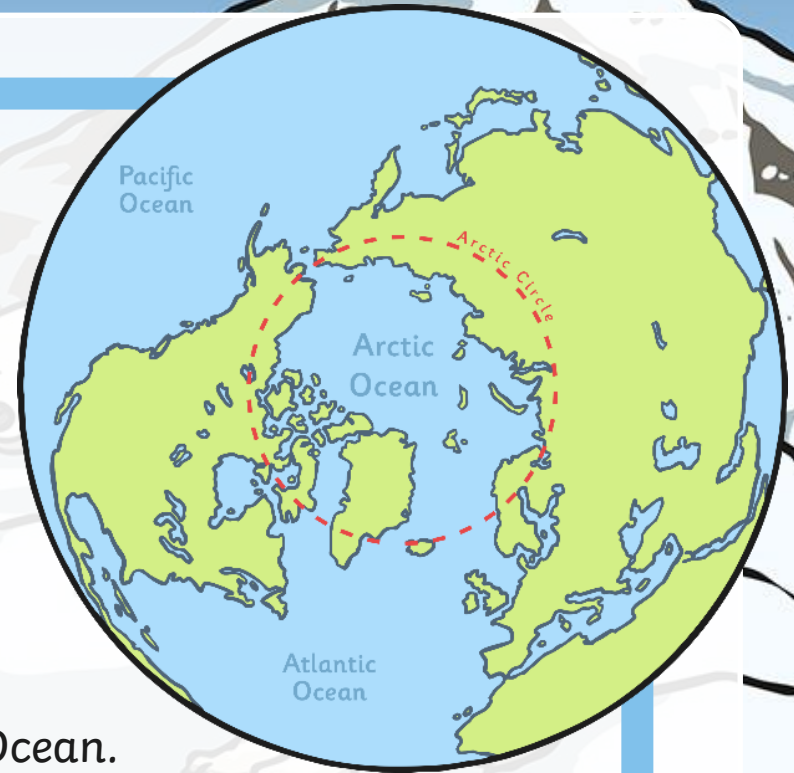
- The Arctic is in the Far North.
- The North Pole is in the Arctic.
- The Arctic has very few plants because it is very cold there.
- Why do you think the Arctic is white?
- What do you know about the Arctic?

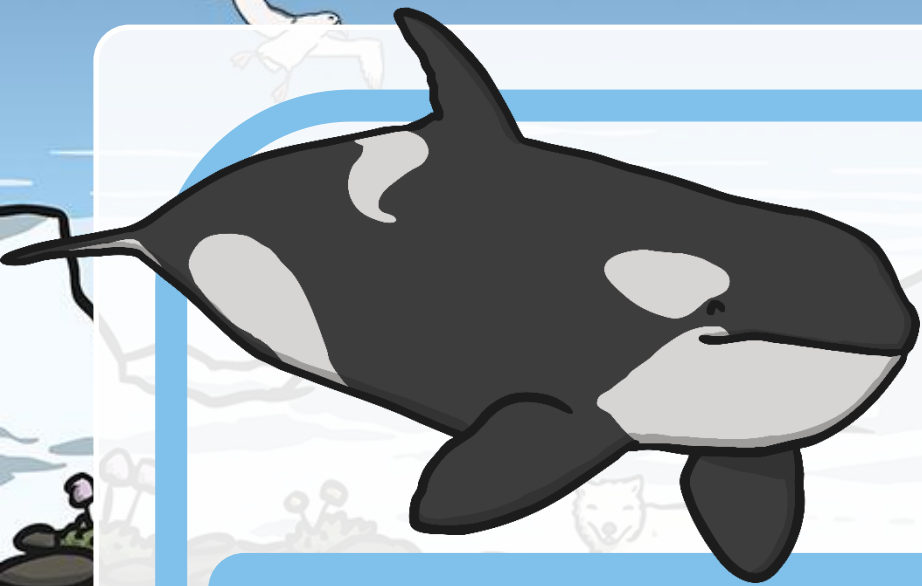


Photo courtesy of NASA Goddard photo and video and dsearls(@ flickr.com) -granted under creative commons licence -attribution



- 
- The Arctic is in the Far North.
 - The ice acts as land.
 - There are also icebergs in the Arctic Ocean.
 - Icebergs are pieces of ice which have broken off and are floating in the ocean.





Can you think of any animals that live in the Arctic?





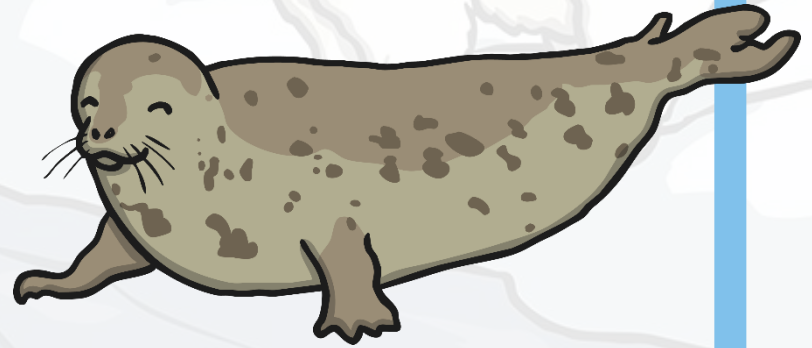
Arctic fox



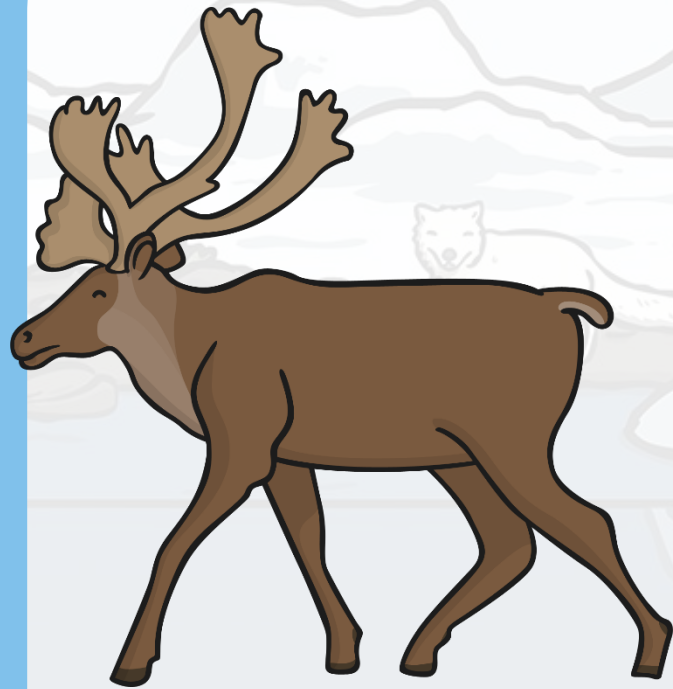
polar bear



Arctic hare



seal



reindeer



walrus



snowy owl



orca

Do people live in the Arctic?



Photo courtesy of AntoniO BonivO (@flickr.com) - granted under creative commons licence - attribution

Houses in the Arctic are often raised from the ground.

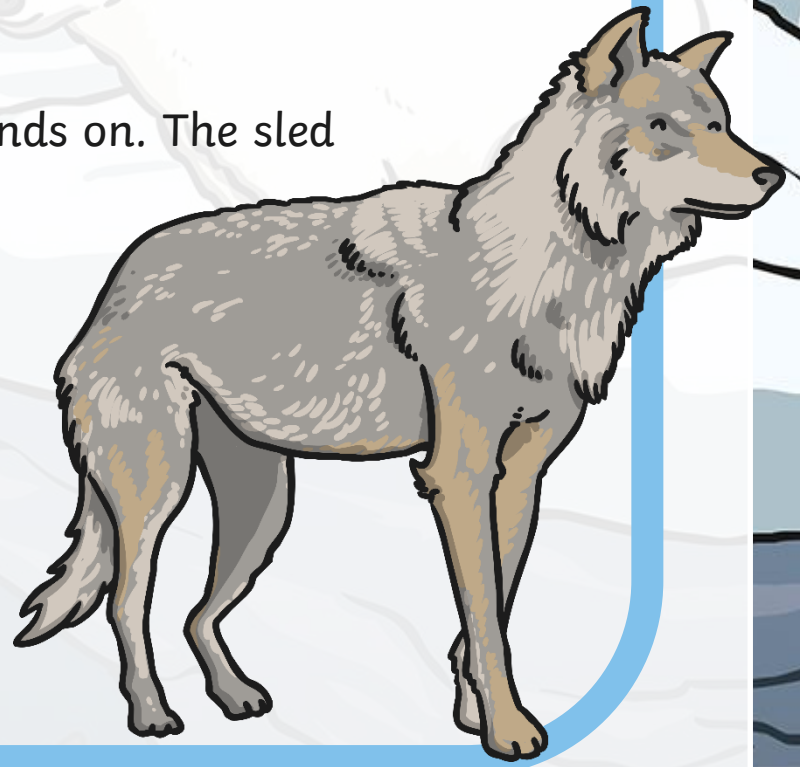
This prevents people from being snowed in and helps keep them warm.



Some people travel by dog sled in the Arctic.

Dogs pull the sled which the person stands on. The sled glides along the snow.

People also travel by snowmobile, which looks like a jet ski on the snow.



The background of the page is a stylized illustration of an Arctic scene. It features a large white polar bear in the center, a smaller white fox to its left, and a white seagull in the top right corner. The ground is covered in snow and ice. In the top left corner, a detailed illustration of a fish with a brown head and a white body with dark spots is shown. A fishing rod with a wooden handle and a reel is positioned diagonally across the lower right portion of the page. The text is contained within a white rounded rectangle with a blue border.

Lots of people in the Arctic go ice fishing.

They make a hole in the sea ice and wait for the fish underneath the ice to take the bait.

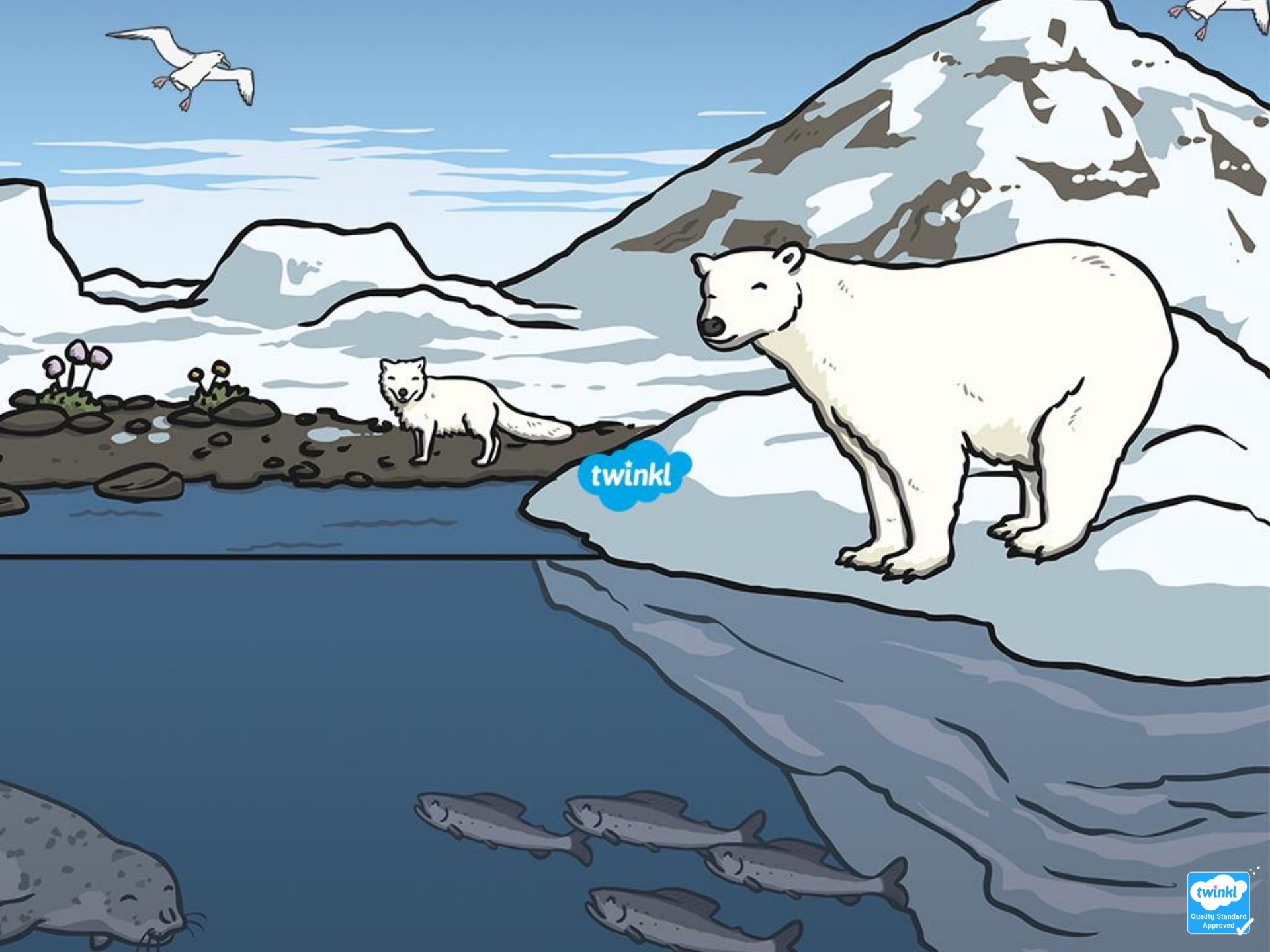
This is a great way of getting food in the Arctic.

Scientists often visit the Arctic to try and find new discoveries as there are lots of places that no one has ever been to.

Also, they measure the amount of sea ice. They do this because the world is getting warmer and this is melting sea ice. This could cause lots of problems in the future.



Photo courtesy of NOAA Photo Library (@flickr.com) - granted under creative commons licence - attribution



twinkl