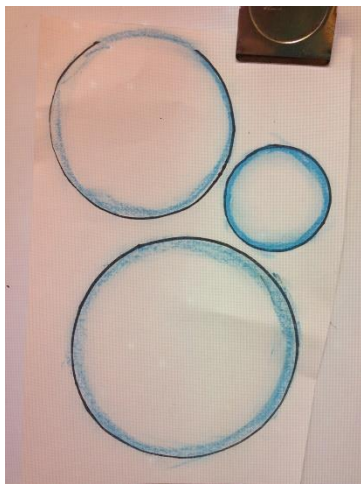


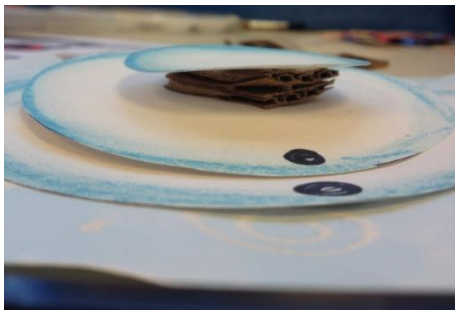
Aerial View Snowman



1. Start with a small/medium square piece of white paper for the background (big enough for the snowballs).
2. Then add snowflakes and swirls and dots with a white crayon and then painted with blue water colour.



3. Draw around 3 different size kitchen objects - cup, small bowl side plate etc... for your snowballs.
4. With a blue oil pastel/crayon/colouring pencil/felt tip draw a circle inside each of the circles (snow balls).



5. Next cut out your circles out and glue the largest to the background. Then use small squares of cardboard cut to stack two together between the remaining parts of the snowman.



6. Finally add the details of the carrot nose, stick arms and the scarf using coloured paper.

